

---

## Bring Your Field Devices to the IIoT Effortlessly

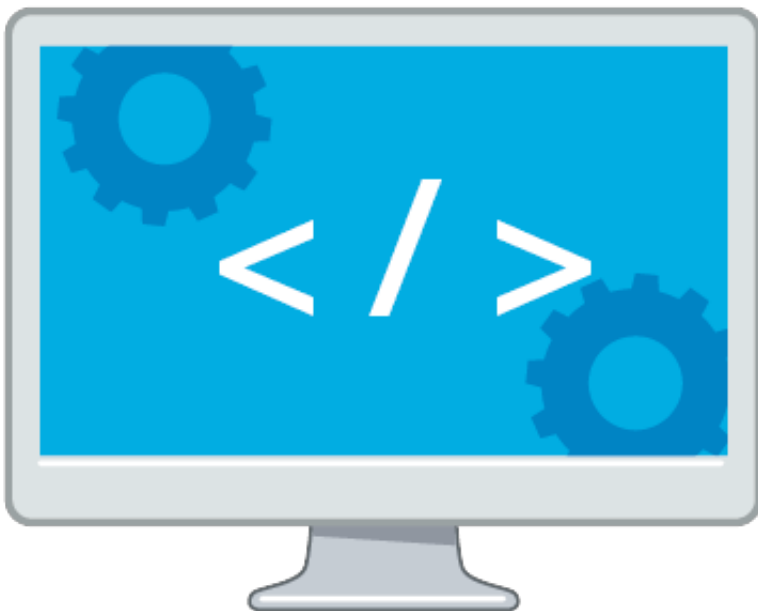
Collecting data from field devices is crucial for the success of any Industrial Internet of Things (IIoT)

application. However heterogeneous networks, different protocols and multiple devices make the

IIoT complex. Bringing all these different elements together will shift your IIoT strategy into top gear.

Read on to discover how to enable connectivity for your IIoT applications effortlessly

---



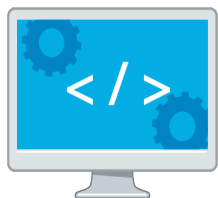
The Industrial Internet of Things (IIoT) has clearly opened up lots of possibilities for industries to improve productivity and efficiency, eventually helping businesses to gain new business insights and revenue. However, it takes time and effort to develop an IIoT application that works perfectly for your business. Factors that determine the success of your IIoT application are the type of data you need to collect, the development of an analytics system that yield business insights, and the enablement of connectivity between field devices and systems. In this article, we will focus on how to enable connectivity for your IIoT applications effortlessly

### Starting from the Field Devices

It's essential to know what kind of field devices you have for your industrial application. Multiple

---

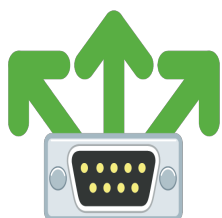
kinds of interfaces and protocols are used by different types of field devices, and acquiring data from them requires different interconnectivity devices. In most applications, industrial equipment is usually serial based, and with good reason as serial devices are associated with these four benefits:



**Easy to Develop:** Serial Application software is a lot easier to program compared to communication technologies such as USB Ethernet, Bluetooth, or Wi-Fi which all require a complex software stack. The learning curve is also much easier for a programmer. We are talking here about a huge difference in programming effort: a couple of lines of coding versus thousands of lines of coding or the difference between a couple of days or a couple of months developing software.



**Cost-effective:** Compared to parallel, serial equipment is cheaper to implement in most cases. Many ICs have serial interfaces that are built-in CPUs, which will reduce material costs. What's more, only three wires are needed to achieve your communication goals. The difference in cost is also significant.



**Easy to Deploy:** Over short distances, as well as with low-speed communication cables are usually less sensitive to noise so the quality of the cable material and the necessity for terminators (for long-distance communication and multidrop applications only) will not easily affect communication. As long as you match the pin assignments correctly, communications will work.



**Easy to Maintain:** Debugging is relatively easy should a communication problem arise. The root cause might be nothing more than a wiring error, a serial parameter setting error, or a protocol setting error (for example, a Modbus setting). Most communication problems can be addressed by fixing these errors.

## Four Tips to Develop Connectivity for Your Serial Devices

---

The benefits associated with serial devices clearly solidify their importance in today's networks. Even with fast-changing technologies in networks, these legacy devices, with the benefits they bring, will still have an essential part to play in the networks of the future. This, learning how to develop connectivity for your serial devices is imperative for your IIoT application. We take a closer look at four considerations you need to examine when you connect your serial devices, along with useful tips that make connectivity simple and easy for you

### **Consideration 1: Don't Let Complex Connectivity Make You Fall Short**

A large number of old-fashioned serial-based equipment is used in field sites, probably featuring different interfaces and data formats. Collecting data from all of them can be complex without suitable solutions

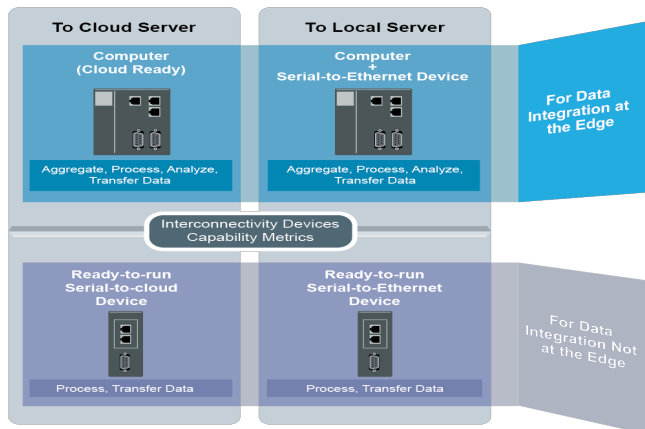
**Quick Tip:** Take stock of the number of serial devices in your network and identify the demands for data collection. The kinds of serial devices you have determine what devices are required to connect to your systems for data collection. Based on the different communication interfaces and data formats, different methods can be applied to help you collect data efficiently

### **Consideration 2: To Cloud or Not to Cloud**

When it comes to developing an IIoT application, one of the most frequently asked questions is whether you should push your data to the cloud.

Based on the different scenarios for different applications, answers will vary. The same applies for your interconnectivity solutions.

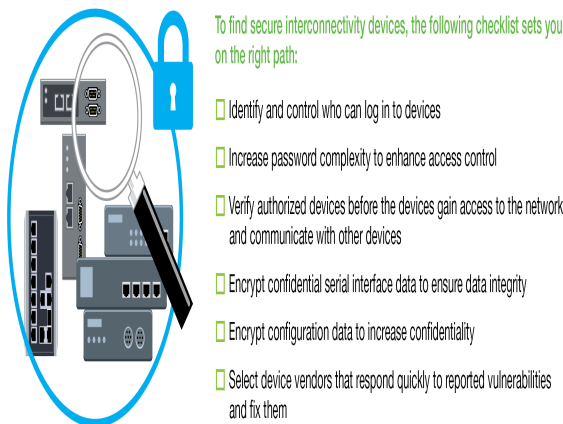
**Quick Tip:** Choose interconnectivity solutions based on the application scenario. The following metrics outline the suggested interconnectivity devices by mapping your data integration needs and the selected backend data server.



### Consideration 3: The First Line of Security Defense

The increasing potential of cyberattacks is always a big concern when developing an IIoT application. Interconnectivity devices should be the first line of security defense to ensure proper protection for data.

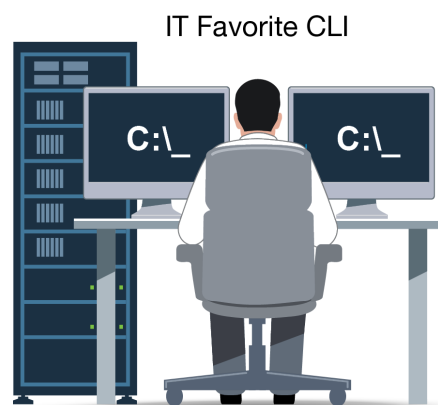
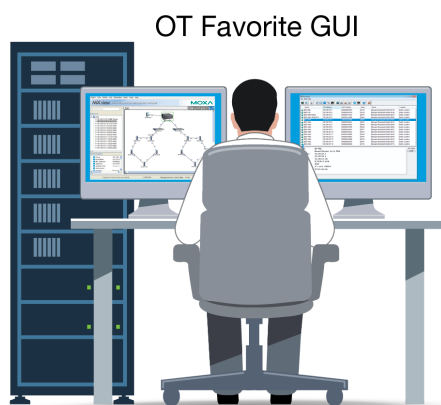
**Quick Tip:** Check through critical security items for interconnectivity devices. The following checklist can help you find a suitable interconnectivity devices to set you on the right path.



### Consideration Four: The Heavy Workload of Mass Device Management

IIoT applications require large numbers of networking devices to get all the field equipment connect and collect data. An efficient solution to manage such a large number of devices is needed; otherwise, it can be a daunting task from the vantage point of management

**Quick Tip:** Choose interconnectivity solutions that have both GUI and CLI types of management tools. With the line between the IT and OT worlds becoming increasingly blurred in the IIoT era, management tools need to be flexible enough to serve users from both these domains.



## Moxa's Solution

Moxa has more than 30 years of expertise in connectivity to enable reliable network solutions for customers. Download the complete Insider Guide to learn more details and useful tips on how to enable IIoT connectivity